

Aluminium tank body for 2A truck - rear-mounted cabinet - 12,500 l



Product benefits

- Sophisticated design with perfect functionality
- Optimum driving stability thanks to low centre of gravity
- Extremely light and flexible product discharge hoses (3" or 4") suitable for pump or gravity operation
- Box-like tank container with stable construction
- Mountable on all types of truck chassis
- Optimum tank container storage incl. stainless steel subframe
- OPTIONAL: Choice of aluminium or stainless steel bumper
- OPTIONAL: 2 high-set tail lights recessed in rear cabinet
- OPTIONAL: Facility for mounting spare wheel bracket

Product details

TYPE DESIGNATION

ALUMINIUM TANK BODY ON 2-AXLE TRUCK IN BOX BODY DESIGN

Wilhelm Schwarz Müller GmbH | Hanzing 11 · 4785 Freinberg · Austria | Tel.: +43 7713 800-0 | office@schwarzmueller.com · www.schwarzmueller.com

Schwarz Müller s.r.o. | Za Dálnicí 508 · 267 53 Žebrák · Česká republika | Tel.: +420 311 908-111 | office.zebrak@schwarzmueller.com · www.schwarzmueller.com

Schwarz Müller Kft. | 2330 Dunaharaszti · Jedlik Ányos út 43. · Magyarország | Tel.: +36 20 4444-333 | office.budapest@schwarzmueller.com · www.schwarzmueller.com

Schwarz Müller Polska Sp. z o.o. | 05-870 Błonie · ul. Powstańców 97 A · Polska | Tel.: +48 22 865 03 08 | office.warszawa@schwarzmueller.com · www.schwarzmueller.com

Rear cabinet, with pumping and measuring system, for mineral oil transport

GENERAL

Vehicle designation acc. to 9.1.1.2 ADR: FL

Tank code acc. to 4.3.4.1 ADR: LGBF

Special provisions acc. to 6.8.4 ADR: TE 7, TE 19

For transporting petrol UN 1203,

diesel fuel and EL heating oil UN 1202

Body weight, depending on equipment: approx. 2.05 t min.

DIMENSIONS

Total width: 2,550 mm

Total height: approx. 3,100 mm

Total length: approx. 7,480 mm

Exact dimensions can only be checked and announced upon specification of the exact truck data

SUBFRAME, MOUNTING AND ATTACHMENTS

Stainless steel subframe bolted to chassis frame

Elastic container mounting

Accessories box with side-opening door

Aluminium bottom-loading box

Plastic mudguards with mud flaps and spray-suppression system

TRANSPORT CONTAINER WITH REAR CABINET

Aluminium alloy and wall thickness as per ADR regulations

Box shape

Gross capacity: approx. 12,500 l

2 chambers, chamber division as per customer specification

Baffle, if techn. required

Overflow pan incl. outlet pipe(s)

Protection for dome fittings

Aluminium catwalk in pan with foldable railing

Aluminium ladder at front left

Earthing pin on left and right

Rear cabinet

Aluminium rear cabinet for measuring system with product collection channel

Fold-up door with lock and handle

Sealing facility

HOSEPIPES

1 plastic hosepipe, black, for 3" hose

1 plastic hosepipe, black, for 2" hose

CONTAINER FITTINGS - PER CHAMBER

1 dome cover with rapid-fill lid

1 electro-optical top sensor

1 tip valve for ventilation

1 fan pot with flame arrester

1 pneum. bottom valve

PIPING WITH BOTTOM-LOADING

Filling on left in direction of travel, output at rear

One drain line DN 100 per bottom valve to distributor on left in direction of travel and connecting line to pumping and measuring system

One API filling port per chamber on left in direction of travel

Gas return line connected to fan pots

Safety pressure relief/vacuum valve

PUMPING AND MEASURING SYSTEM FOR DRY AND WET HOSE SYSTEM (MID)

Suitable for petrol, diesel oil and EL heating oil

Pump filter

Mechan. driven pump with pneum. overflow valve

Pneumatic gas extractor DN 80 with automatic vent and temperature sensor

Meter DN 80, with pulse generator

Electron. meter with DIN A5 label printer

Aluminium hose reel with pneumatic winding mechanism

30 m high-pressure hose DN 40

nozzle ZV 400 with pivoting joint and tap pipe

Brackets for adapter pieces

EQUIPMENT

- 1 external cable drum with automatic winding mechanism
 - 2 x 6 kg fire extinguishers
 - 2 warning triangles
 - 1 hazard warning flasher with work light and batteries
 - 1 plastic collecting vessel
 - 1 dustpan, galvanised
 - 1 hand brush
 - 1 PVC box with oil binding agent
 - 1 high-visibility vest
 - 1 pair of protective goggles
 - 1 pair of gloves
 - 1 eyewash bottle
 - 1 drain cover
-

LABELLING

- 1 rotary plate (33/1203 or 30/1202) at both front and rear
 - 3 removable hazardous substance labels (flame symbol)
 - 3 removable hazardous substance labels (environmentally hazardous substances)
 - Rear markings as per ECE standards
-

ELECTRICAL EQUIPMENT

- Original truck electrical equipment retained
 - Installation of side marker lights fitted to truck chassis
 - Ex-proof rear cabinet light
 - 2 contour lights on underride protection
-

PAINTWORK

- Priming and spray painting with 2-component acrylic paint for commercial vehicles (standard RAL or truck colour)
- Subframe with attachments and transport containers unicoloured as per colour specifications
- Plastic components unpainted
- Powder-coated attachments/installation parts black

Reflective contour marking strips across entire length of sides (continuing onto truck cab) and all-round contour marking at rear (white on sides and red at rear by default), according to ECE 48

ACCEPTANCE

Acceptance as per ADR
Tank documentation
Type approval
Certificate of conformity

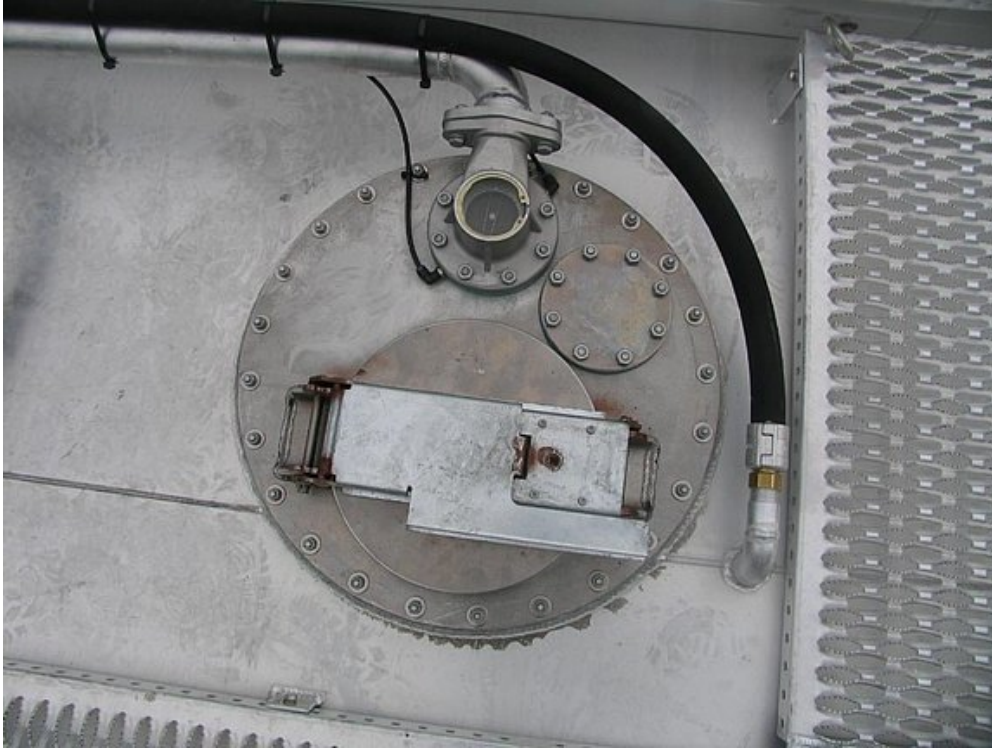
Product impressions



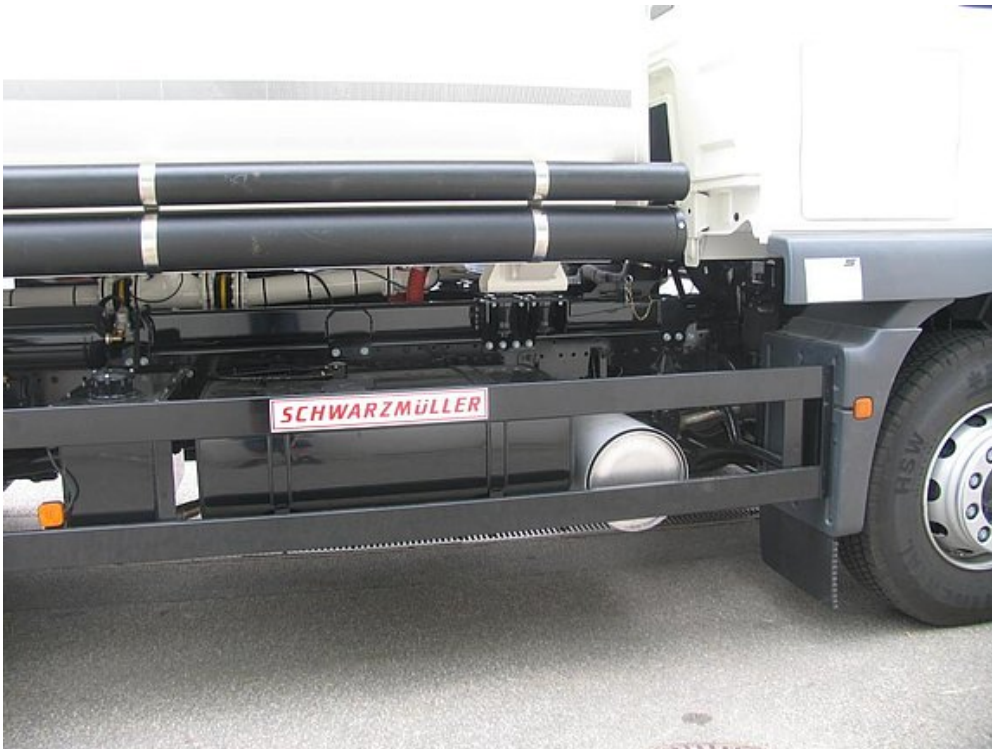
Modern design and maximum vehicle functionality



Rear-mounted cabinet with folding door for measuring systems and hose reel



User-friendly arrangement of dome fittings



Lateral protection with aluminium profiles



Accessories box with side-opening door offers plenty of storage space



OPTIONAL: Choice of aluminium or steel bumper



OPTIONAL: 2 high-set tail lights recessed in rear cabinet



OPTIONAL: Facility for mounting spare wheel bracket

