

3-axle sliding tarpaulin platform semitrailer



Product benefits

- Low corrosion, high-quality aluminium body components, tested according to EN 12642 XL
- Perforated external frame with approx. 100 mm hole spacing, 40/25 mm slot according to DIN EN 12640 and 23 pairs of recessed 2.5 t
- Installation of axles from well-known manufacturers such as SAF or BPW
- OPTIONAL: Certified according to DC Directive 9.5, certified for beverages and barrel goods
- OPTIONAL: Version with sliding tarpaulin + side walls
- OPTIONAL: Manually operated hydraulic lifting roof, 400 mm elevation for rapid loading and unloading
- OPTIONAL: Variable load securing via bolt-on lashing systems (airline lashing rail, perforated combination impact protection)
- OPTIONAL: Twin-level loading system CTD III for 11 x 3 EURO pallets, load capacity: 400 kg/pallet
- OPTIONAL: Extendible portal columns (each by approx. 400 mm) for easier loading and unloading

Product details

TYPE DESIGNATION

3-AXLE SLIDING TARPAULIN PLATFORM SEMITRAILER RH125 P

WEIGHTS

Gross train weight (perm.): 40 t
Gross weight (techn.): 39 t
Axle assembly load (techn.): 27 t
Fifth-wheel load (techn.): 12 t
Tare weight: approx. 6 t

DIMENSIONS

Internal platform length: approx. 13,620 mm
Internal platform width: approx. 2,480 mm
Total width: 2,550 mm
Load space internal height: approx. 2,720 mm
Lateral loading height below guide rail: approx. 2,620 mm
Internal width between guide rails: approx. 2,430 mm
Portal loading height: approx. 2,620 mm
Portal loading width: approx. 2,480 mm
Loading height: approx. 125 mm over fifth-wheel height

FRAME

Welded steel frame construction
Frame for unladen fifth-wheel height of 1,090 - 1,190 mm with air-sprung STT
Replaceable 2" kingpin (EC installation dimension, width across corners: 2,040 mm)
Perforated external frame with approx. 100 mm hole spacing, 40/25 mm slot according to DIN EN 12640 and 23 pairs of recessed 2.5 t lashing points

CHASSIS

Air suspension with lifting and lowering device (approx. +120/-80 mm)
Automatic adjustment of driving level from 15 km/h

air suspension unit with low-maintenance 430 mm disc brake axles
3 x 9 t rigid, wheelbase 2 x 1,310 mm

Tyres :

6 x 385/65 R 22.5 160J, manufacturer as per factory specifications
6 steel wheel rims 11.75 x 22.5, 10-hole, 120 mm rim offset, silver

SUPPORT FIXTURES

Mechan. 2 x 12 t support jacks, single-sided operation and thrust compensation, manufacturer as per factory specifications

BRAKE SYSTEM

Brake system according to EC Directive 71/320 or E CE R13

Two-line brake

EBS - electronic brake system

Wabco 2S2M = one axle sensed

RSS - stability program

Spring-loaded parking brake on 2 axles

Steel air tank

FLOOR

Resin-coated plywood floor, 27 mm, flush with external frame

2 steel top-hat rails over the longitudinal beams

(floor load capacity 7 t, stacker axle load according to CSC)

SIDE WALLS/SLIDING TARPAULIN

Fixed aluminium hollow profile front wall with 2 centre supports, inside with 2 rings inside for load securing

Closed with tarpaulin over front wall, in same colour as side tarpaulin

Front wall reinforced inside with galvanised steel plate,
approx. 650 mm high

Plastic sliding tarpaulins on both sides with load certification according to Code XL; welded horizontal and vertical strap reinforcements incl. turnbuckles as well as front and rear bolt locks, openable on all 4 corners, with ratchet tensioner at rear
tarpaulin sealed against external frame,
tarpaulin manufacturer as per factory specifications, tarpaulin colour according to availability
Aramid-reinforced plastic roof tarpaulin, translucent

Bolted portal at rear with aluminium corner posts, upper crossbeam with forward-sliding cover, incl. fully opening double door in profile design covering entire load space height, each leaf

equipped with 2 internal espagnolettes

POSTS/COVER

2 fixed aluminium corner posts at front, bolted, protruding from sides
3 centre posts on left in direction of travel, movable across entire length
3 centre posts on right in direction of travel, movable across entire length
4 rows of slat pockets, 1st pocket row at bottom 460 mm, spacing approx. 160/450/450 mm, with
4 rows of aluminium pointed slats 100/25 mm

Versus sliding cover with plastic brackets, forward-sliding with automatic elevation, limited backward movement (opened from above) = pushed together in loading area, with vertical and horizontal guide rollers = smooth operation
Aluminium guide rail profile on both sides for sliding tarpaulins and posts, design height 140 mm
Control rod for sliding tarpaulin (bracket on interior side protection)

ELECTRICAL EQUIPMENT

24 V lighting system according to EC Directive 76/756/E CE
2 seven-chamber tail lights in underride protection
LED side marker lights
2 clearance lamps
2 contour lights on underride protection
2 x 7-pin and 1 x 15-pin socket

PAINTWORK

Blasted with steel granulate, treated with zinc dust primer and spray painted with 2-component acrylic paints for commercial vehicles (standard RAL or truck colour)

Plastic and hot-dip galvanised parts unpainted,
powder-coated attachments/installation parts black

Reflective contour marking strips across entire length of sides and all-round contour marking at rear (white on sides and red at rear by default), according to ECE 48

ACCESSORIES

Rear markings as per ECE standards (horizontal on rear doors/rear wall)

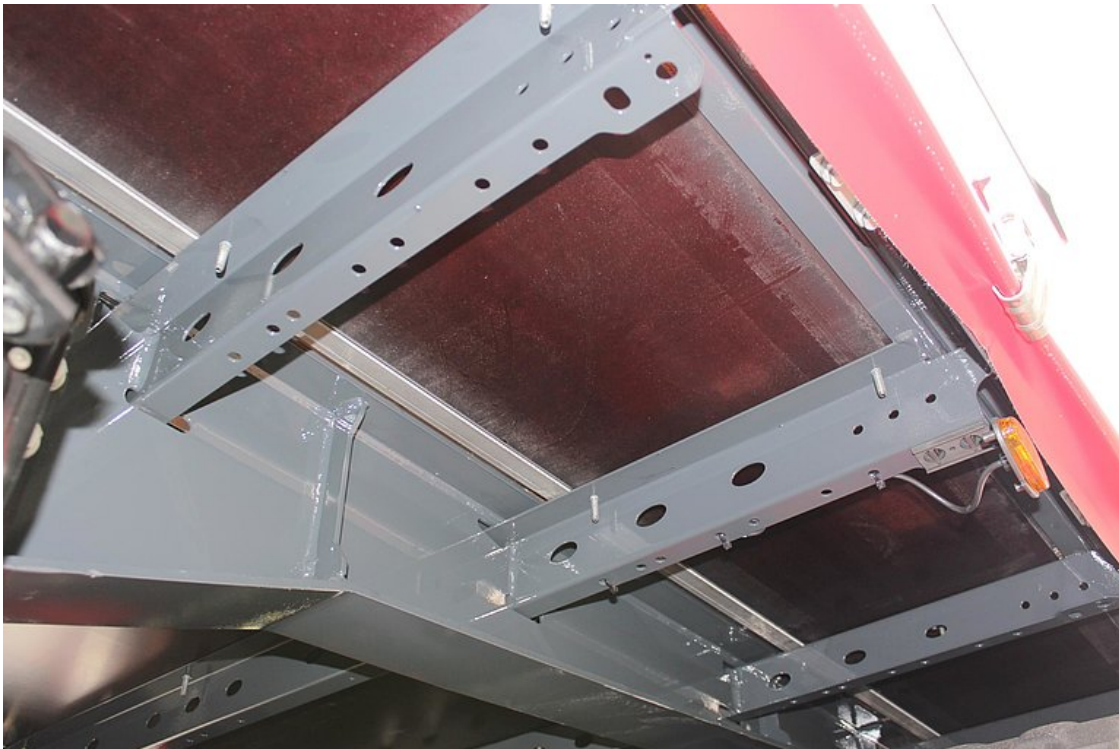
ATTACHMENTS

Rear crash guard with portal post protection and lower post reinforcement
Wheel chock(s) as per regulations
1 x retractable step unit at rear right
Single wheel plastic mudguards with spray protection as per regulations
Aluminium tarpaulin mounting strips bolted on both sides of external frame
Aluminium underride protection, coated white
Side impact protection made from aluminium profiles as per regulations, coated black
1 spare wheel bracket for 1 spare wheel (rear right)
1 plastic toolbox, lockable, unpainted, on left after axle

Product impressions



Low corrosion, high-quality aluminium body components, tested according to EN 13642 XL



27-mm resin-coated panel floor, flush with external frame and with 2 steel top-hat profile rails above the side members (stacker axle load 7 t)



Bolted portal at rear with aluminium corner posts and fully opening double door in profile design



OPTIONAL: Manually operated hydraulic lifting roof, 400 mm elevation for rapid loading and unloading



Reinforced aluminium hollow profile front wall with integrated equipment bracket



Perforated external frame with approx. 100 mm hole spacing, 40/25 mm slot according to DIN EN 12640 and 23 pairs of recessed 2.5 t



Torsionally rigid, welded ladder frame structure



OPTIONAL: Version with sliding tarpaulin + side walls

Category: Platform semitrailers "Standard"

