

2-axle aluminium tank semitrailer for airfield and on-road operation with pumping and measuring system



Product benefits

- Sophisticated design with perfect functionality
- Flexible handling of special customer requests
- Highest product purity thanks to optimum drainage based on unique double-wedge construction
- Aluminium or stainless steel chassis
- Installation of axles from well-known manufacturers such as SAF or BPW
- OPTIONAL: Choice of aluminium or stainless steel bumper
- OPTIONAL: High-set lights integrated in dome tank
- OPTIONAL: Separate plastic box for fire extinguisher

Product details

TYPE DESIGNATION

2-AXLE ALUMINIUM TANK SEMITRAILER IN BOX BODY DESIGN

With pumping and measuring system, for airfield operation and road transport

GENERAL

Vehicle designation acc. to 9.1.1.2 ADR: FL

Tank code acc. to 4.3.4.1 ADR: LGBF

Special provisions acc. to 6.8.4 ADR: TE 7, TE 19

For transporting JET A-1

CHASSIS AND ATTACHMENTS

Swivel rocker with cable bushing on fifth-wheel coupling

Stainless steel chassis frame

Single wheel plastic mudguards with mud flaps and spray-suppression system Side impact protection, foldable Aluminium underride protection

Axles Air suspension unit with low-maintenance axles and disc brakes,
2 x 10 t rigid, wheelbase 2,050 mm

Suspension

Air suspension

Tyres

4 x 425/65 R 22.5, 165 K, manufacturer as per factory specifications 4 aluminium wheels, 11.75 x 22.5, polished outside, 10-hole, without rim offset

BRAKE SYSTEM

Brake system according to EC Directive 71/320 or ECE R13

Two-line brake

EBS-E = electronic brake system

WABCO 2S/2M = one axle sensed

RSS - stability program

Spring-loaded parking brake on 2 axles

Aluminium air tank

TRANSPORT CONTAINER - SELF-SUPPORTING

Aluminium alloy and wall thickness as per ADR regulations
Double-wedge box format for complete drainage Gross capacity: approx. 34,000 l
1 chamber
Baffles, if techn. required
Water sump
Overflow pan incl. outlet pipe(s)
Protection for dome fittings
Aluminium catwalk in pan with foldable railing Aluminium ladder at rear

CONTAINER FITTINGS

3 dome covers with rapid-fill lids
1 fill level indicator, 10"
1 pneum. level switch for fill level monitoring
1 pneum. level switch for low-level limiter 3 pneum. tip valves
3 fan pots with flame arresters
1 mech. dipstick

Filling 1 pneum. bottom valve with filling line and industrial dry couplings

Output
2 pneum. bottom valves for output DN 100

THE FITTING CONFIGURATION ENABLES THE FOLLOWING OPERATIONS

Underwing pressure fuelling via long hose, underwing pressure fuelling via two deck hoses
Refilling via deck hoses
Overwing fuelling

PIPING

Aluminium piping routed to the front - through the swivel rocker - to the fittings cabinet on the STT
Gas return line connected to fan pots
Safety pressure relief/vacuum valve

MONITORING INSTRUMENTS

- Pump pressure
 - Venturi pressure
 - Hydraulic pressure
 - Flow chart
 - Pressure gauge for aluminium air tank
 - Pump suction/-pressure gauge
 - Sample extraction from piping
-

EQUIPMENT

- 1 external cable drum with automatic winding mechanism
 - 2 x 6 kg fire extinguishers
 - 2 warning triangles
 - 1 hazard warning flasher with work light and batteries
 - 1 plastic collecting vessel
 - 1 dustpan, galvanised
 - 1 hand brush
 - 1 PVC box with oil binding agent
 - 1 high-visibility vest
 - 1 pair of protective goggles
 - 1 pair of gloves
 - 1 eyewash bottle
 - 1 drain cover
-

LABELLING

- 1 single substance plate (30/1223)
 - 3 removable hazardous substance labels (flame symbol)
 - 3 removable hazardous substance labels (environmentally hazardous substances)
 - Rear markings as per ECE standards
-

ELECTRICAL EQUIPMENT

- 2 seven-chamber tail lights in underride protection
 - LED side marker lights
 - 2 clearance lamps at front
 - 2 contour lights on underride protection
 - 15-pin socket
 - 2 ex-proof fittings cabinet lights
 - 2 red airfield warning lights
-

PAINTWORK

- Priming and spray painting with 2-component acrylic paint for commercial vehicles (standard RAL or truck colour)
 - Chassis with attachments and transport containers unicoloured as per colour specifications
 - Plastic components unpainted
 - Powder-coated attachments/installation parts black
 - Contour markings
 - Continuous reflective stripe on left and right, white, in tank length
 - All-round at rear, segmented, red
-

ACCEPTANCE

Acceptance as per ADR

Tank documentation

STT EQUIPMENT

Refuelling platform with steps on left in direction of travel

Fittings cabinet with fold-up doors on both sides

Pump unit on right in direction of travel

Substructure for swivel rocker on fifth-wheel coupling

PUMP (IN FITTINGS CABINET)

1 self-priming tandem pump with hydraulic drive

FILTER WATER SEPARATOR

1 filter water separator with attached

gas separator

Filter equipment:

1 piston-type differential pressure gauge

1 gas return line to tank

1 check valve after filter

Drainage line with 2 shut-off cocks R 3/4" and dummy caps

MEASURING SYSTEM (IN FITTINGS CABINET)

1 flow meter, with electron. meter

Parallel display on refuelling platform

Label printer in cab

1 sight glass

1 automatic valve for inline pressure control

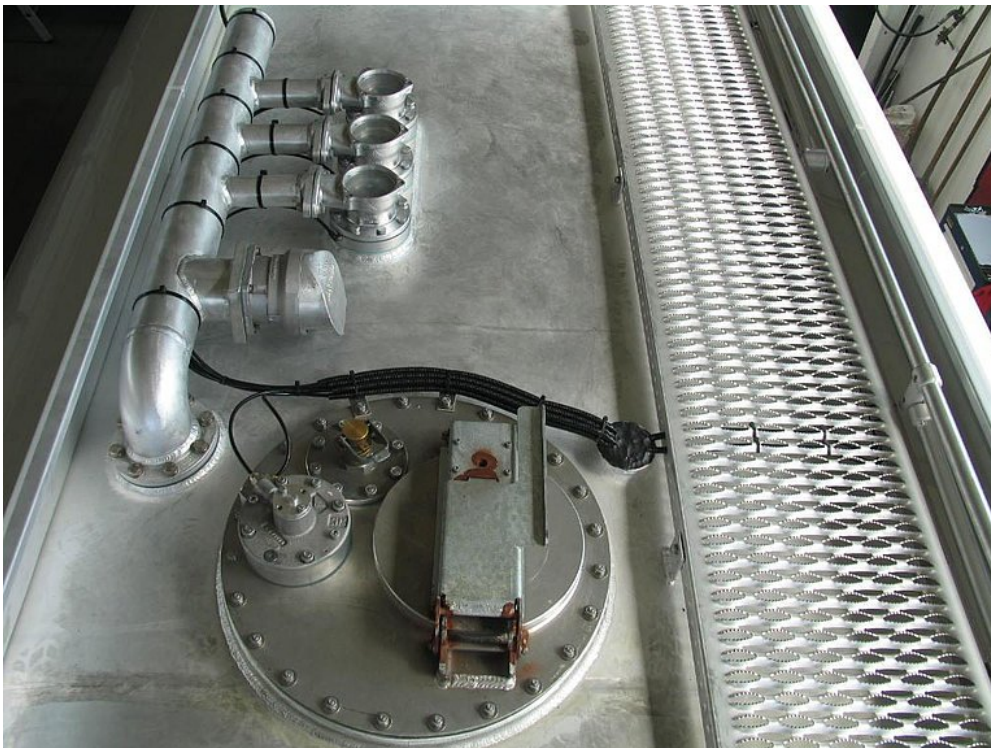
Pressure relief for the piping system

2 venturi nozzles

Product impressions



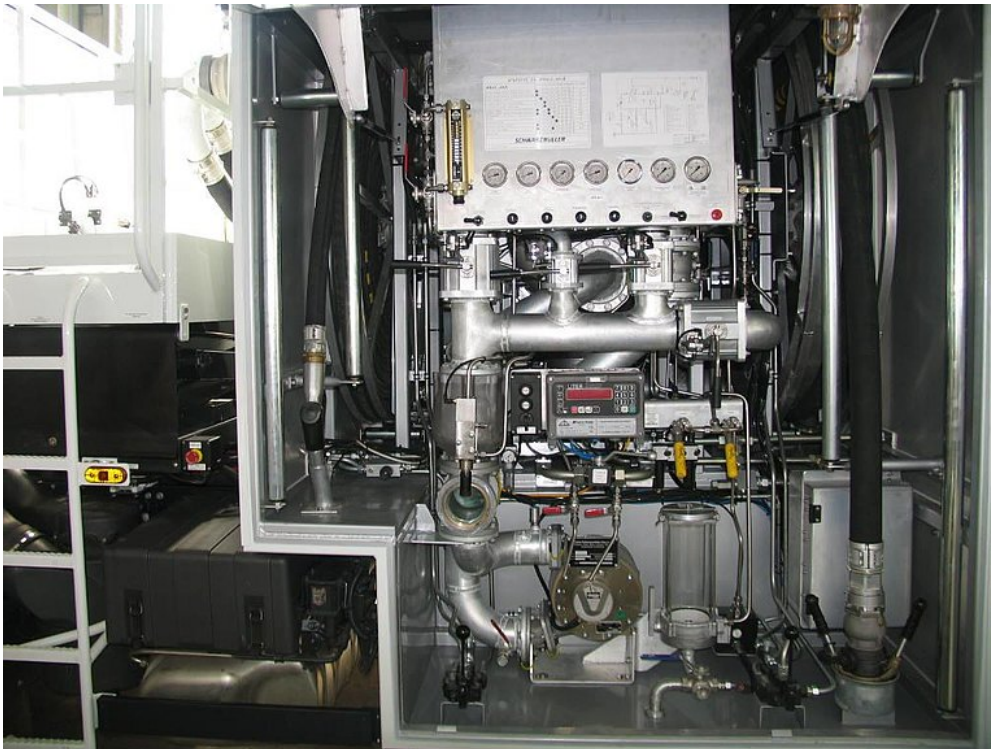
Modern design and maximum vehicle functionality



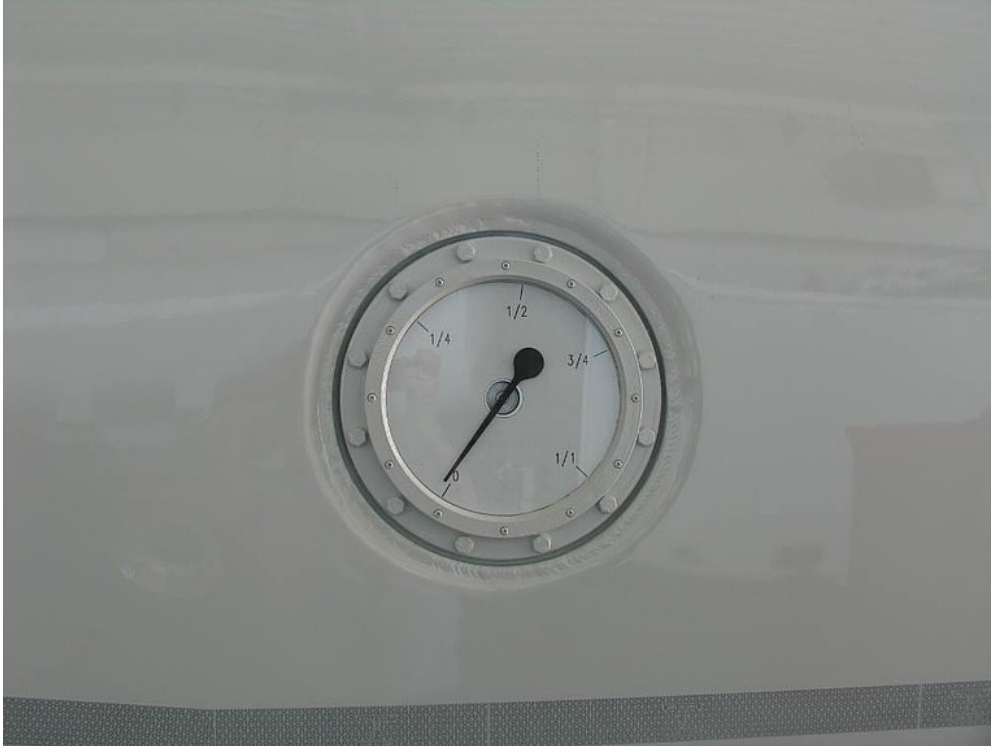
User-friendly arrangement of dome fittings



Ideal arrangement of equipment



Fittings cabinet features clearly arranged fittings



Fill level gauge



OPTIONAL: Choice of aluminium or steel bumper



OPTIONAL: High-set lights integrated in dome tank



OPTIONAL: Separate plastic box for fire extinguisher

