

3-way tipper body for 3A truck - building site



Product benefits

- Insulated hollow chamber body for slow cooling, freezing and adhesion of load
- Tipper body construction using conical, trapezoidal profile side members in high-strength, lightweight design with small bottom panels for high dent resistance and shock absorption
- Torsionally rigid, weight-optimised subframe construction
- Hard chrome-plated, high-quality tilt cylinder
- OPTIONAL: Bordmatic (= hydraulically folding side wall) on left side
- OPTIONAL: Reinforced side walls with material-repellent membrane construction made from fine-grained special steel panels
- OPTIONAL: Electropneumatic side wall locking with switch operation in cab
- OPTIONAL: Aluminium flap on lateral central locking shaft
- OPTIONAL: Foldable lashing rings
- OPTIONAL: Foldable aluminium underride protection for road-finishing use
- OPTIONAL: Front and rear crane mounting with reinforced subframe

Product details

TYPE DESIGNATION

3-WAY TIPPER BODY ON 3-AXLE TRUCK - BUILDING SITE

For handling bulk materials such as sand, gravel, rubble, ground excavation etc. on building sites

WEIGHTS

Body weight: approx. 2.4 t

DIMENSIONS

Internal length: approx. 5,100 mm

Internal width: approx. 2,420 mm

Load volume: approx. 11 m³

Total width: 2,550 mm

Body height, loading height etc. can only be checked and announced upon specification of the exact truck data

PAINTWORK

Blasted with steel granulate, treated with zinc dust primer and spray painted

2-component acrylic paints for commercial vehicles (standard RAL or truck colour)

Plastic and hot-dip galvanised parts unpainted,
powder-coated attachments black

Reflective contour marking strips across entire length of sides (continuing onto truck cab) and all-round contour marking at rear (white on sides and red at rear by default), according to ECE 48

ACCESSORIES

Rear markings as per ECE standards

ATTACHMENTS

Tipper body rubber centre support

Bracket for wheel chock(s)

Mud flaps for rear mudguards

Shovel and brush brackets

Rubber skirting on side walls on both sides

Hooks for dosing chains on swivelling rear wall

SIDE WALLS

Fixed steel plate front wall, 4 mm, approx. 980 mm high

1-part reinforced aluminium hollow profile side walls, 60/4/3 mm, approx. 880 mm high,
foldable with extended swivel bolt locks and spring lifting aid,
hinged with pneumatic locking on left operated from cab,
right-sided man. central locking

4 mm steel sheet rear wall, approx. 980 mm high, hinged with raised bearing and pneum. lock
that can be operated from the cab and unit can be partially folded down =
upper self-aligning bearings with screw retention

Fixed rear corner posts, raised, side-mounted

SUBFRAME

Continuous side members with tilt cylinder bearings and outriggers

Low body height approx. 440 mm due to recessed, welded outriggers and special tilt cylinder

Connector lock for tipper body with cross-over protection

HIGH-PRESSURE HYDRAULIC TIPPING SYSTEM

26 t tilt cylinder for 3-way tipping, with safety rope,
rearward tipping angle: approx. 49°

60 l pump for direct flange mounting, 45 l oil reservoir with oil filling,
pneum. tip valve with overpressure protection and actuation in cab

TIPPING LOADING RAMP

Full-steel welded construction with fine-grained special steel floor panels, 5 mm

HARDOX HB450

(slight floor unevenness possible due to weld distortion)

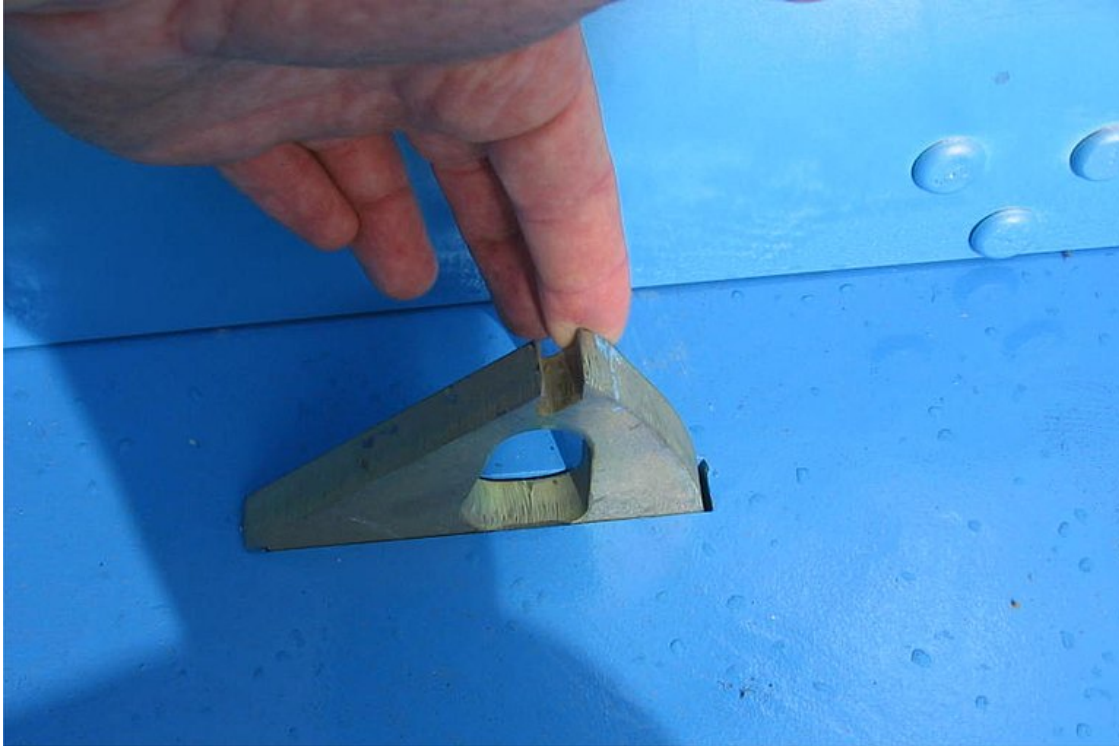
Product impressions



Tipper body design with conical trapezoidal profile side members in high-strength, lightweight design with small bottom panels for high dent resistance and shock absorption



Hard chrome-plated, high-quality tilt cylinder



OPTIONAL: Foldable lashing rings



OPTIONAL: Foldable aluminium underride protection for road-finishing use



4 mm steel sheet rear wall, approx. 980 mm high, hinged with raised bearing and pneum. lock that can be operated from the cab and unit can be partially folded down



3-way tipper body on 3-axle truck - building site



OPTIONAL: Bordmatic (= hydraulically folding side wall) on left side



OPTIONAL: Reinforced side walls with material-repellent membrane construction made from fine-grained special steel panels

