

Contents

1. Introduction.....	3
2. Inspection items.....	4
21 Preliminaries.....	4
22 Front wall	4
2.2.1 Front load-through equipment	4
23 Side wall	5
24 Lateral sliding tarpaulin.....	6
25 Quick Slider side wall.....	7
26 Rear wall.....	8
27 Cover	9
28 Twin-level equipment.....	10
29 Load securing / lashing equipment.....	11
3. Annual inspection certificate	13 / 14

Wilhelm Schwarzmüller GmbH

Hanzing 11
4785 Freinberg
Austria

Phone: +43 7713 800-0

iasi@schwarzmueller.com

office@schwarzmueller.com

www.schwarzmueller.com

© 2021 Wilhelm Schwarzmüller GmbH
All rights reserved

1. Introduction

Purchasing a Schwarz Müller vehicle was a decision for a high-quality product.

The certification of your vehicle in accordance with DIN EN 12642 – Code XL makes annual inspections by

- Schwarz Müller servicing workshops
- Schwarz Müller authorised dealers
- any inspection association authorised to carry out and/or confirm the annual general inspection (e.g. § 57a in Austria)

a prerequisite.

Please note that the freight security logbook will only remain valid if:

1. the compulsory annual inspections are actually carried out;
2. all inspection items are checked as specified by the manufacturer;
3. the vehicle has not been modified without the manufacturer's written approval.

Always keep this logbook in the vehicle even when hiring out or selling it – it will help you show how well your vehicle has been maintained and is the record to present in case of traffic checks.

2. Inspection items

2.1 Preliminaries

Check the following before starting the inspection routine:

- Is the VIN on the cover and the inspection checklist on page 13/14 the same as that in the vehicle?

The section below describes the annual inspection items and components sorted by assemblies.

The equipment configurations were customised to meet the customer's preferences.

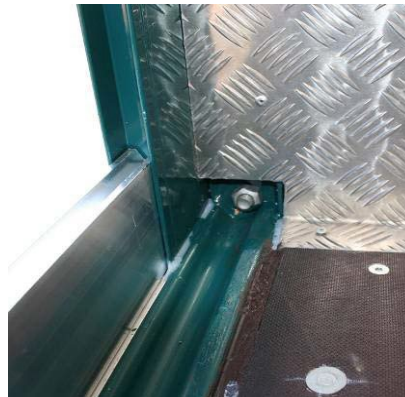
Actual component positions and images may differ according to the model type and configuration.

General notes on inspection:

- Check the weld seams for cracks
- Check whether screws and rivets are tight
- Check that all configuration options are in place and in good working order
- Check the tension belts, tarpaulin sheaves, tarpaulin tensioning gears and door locks for proper operation and damages
- Check bonded parts for tight fit
- Check the operability of moving parts

Immediately have damages removed by a service centre authorised by Schwarz Müller. Only use spares approved by Schwarz Müller.

2.2 Front wall



Check that all rivets and screws are tight Check that the front corner post mount is tight (interior)

2.2.1 Front load-through equipment

Also check the following items if your vehicle features front load-through equipment:



Crosspieces and rails:
Check that all rivets and screws are tight

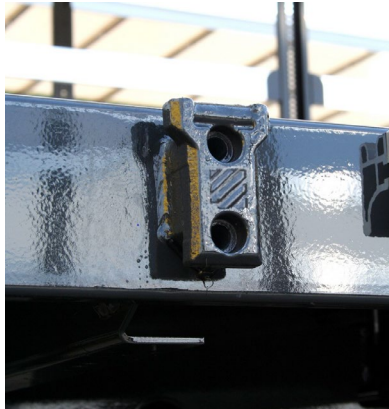


Latches and latch brackets: Check that all rivets and screws are tight

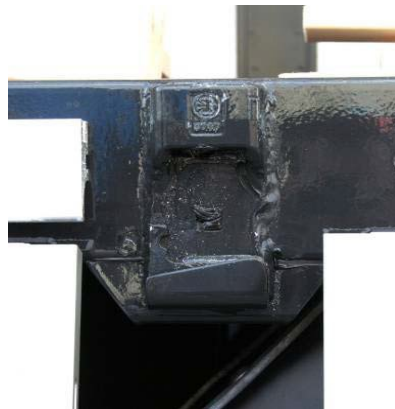


Check the the hinge screws are tight

2.3 Side wall



Stanchion bearings:
Check the weld seams for cracks



Stanchion bearings (side panel):
Check the weld seams for cracks



Interior stanchion bearings:
Check the weld seams for cracks



Slat pockets:
Check that rivets are tight



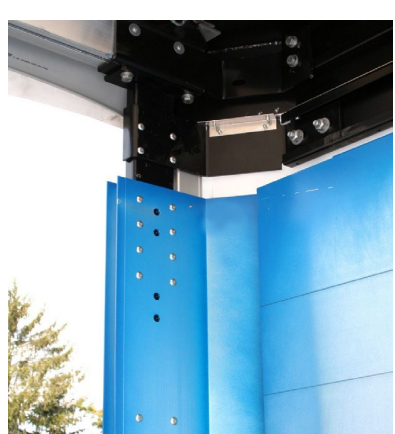
Carriages at central posts:
Check that rivets are tight



Side walls: Check that rivets are tight,
check that rivets are tight



Rear corner posts:
Check that rivets are tight



Front corner posts:
Check that rivets are tight



Quick-Slide latch:
check that latches are tight

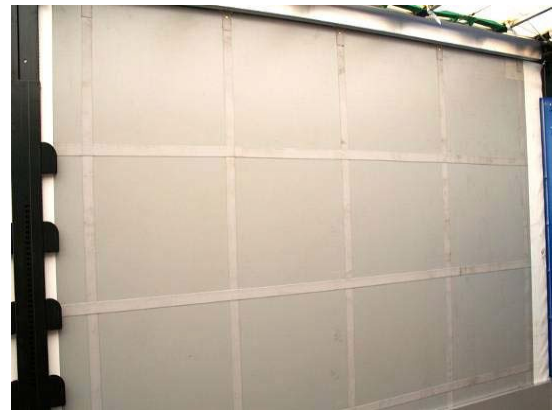
2.4 Lateral sliding tarpaulin



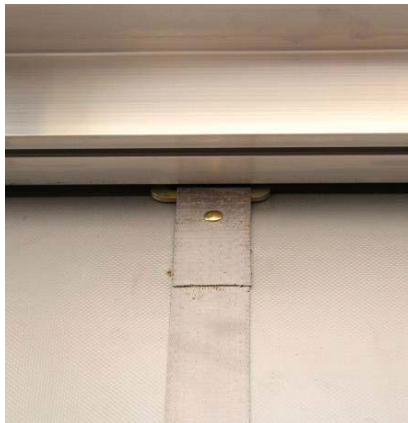
Direct tensioners:
Check that rivets are tight



Flat hooks:
Check that rivets are tight
and the strap is undamaged



Interior of tarpaulin:
Check the weld seam of strap
reinforcements for cracks



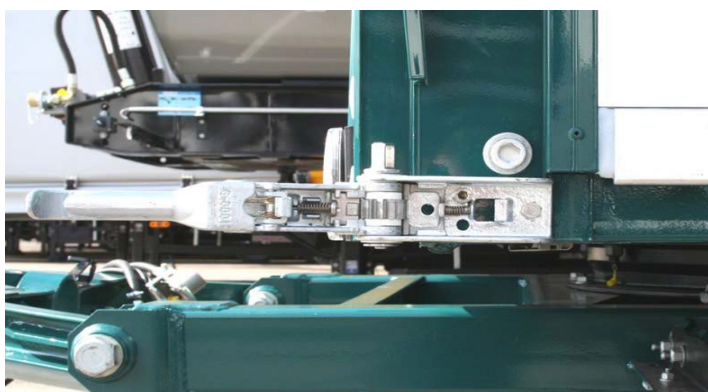
Sheaves:
Check that rivets are tight, check
belts for damages and cracks



Rear tensioning gear:
Check proper operability,
check tarpaulin draw tube adapter
for damages



Quick-Slide tensioner:
Check that rivets are tight, check
belts and tensioners for damages
and cracks

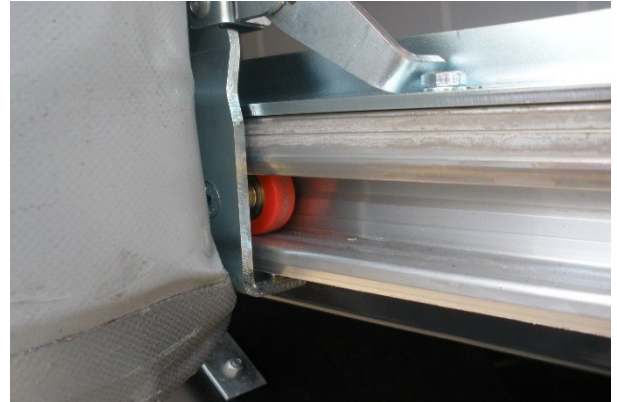


Check that the front corner post screw fitting is tight,
check proper operation of tensioning gear,
check tarpaulin draw tube adapter for damages



Rear tensioning gear:
Check proper operation, check
tarpaulin draw tube adapter for damages

2.5 Quick Slider side wall



Visual inspection of Quick Slider for plastic deformation etc. Check bottom joints and carriages for wear and correct operability, check that screw fitting is tight



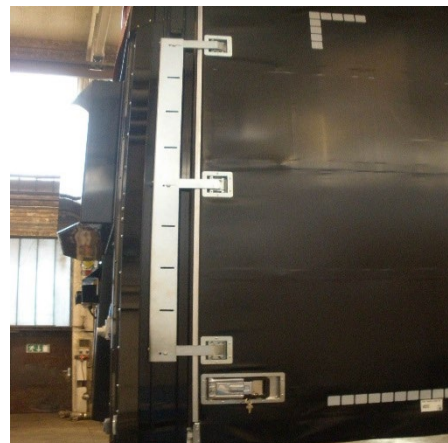
Check top and bottom carriages for wear and correct operability. Check that all rivets and screws are tight



Check bottom guide rail for wear and correct operability, Check that screws fittings are tight.



Check that riveting of bottom side tarpaulin is tight



Quick Lock door: Check latch for wear and correct operability, mountability on rear corner post

2.6 Rear wall



Check that all rivets and screws are tight



Check hinges for damages and proper operation
Check hinge mount for damages and tight fit



Top rear door:
Check the locking pin for damage and that the screws are tight

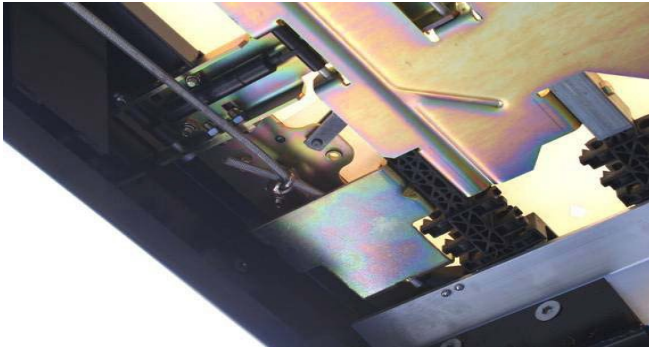


Bottom rear door:
Check the locking pin for damage and that the screws are tight



Fixed rear wall:
Check that all rivets and screws are tight

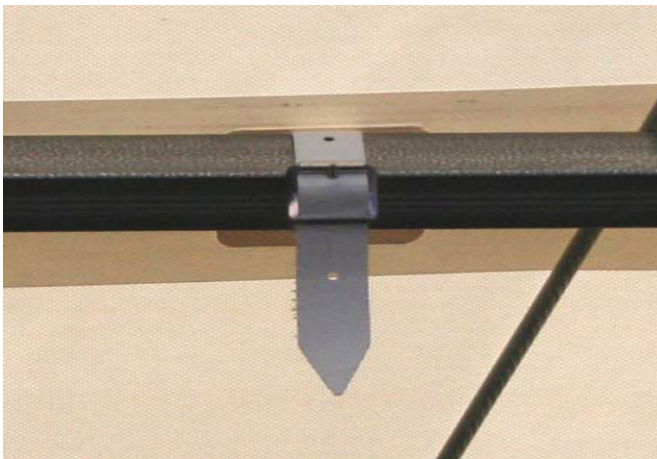
2.7 Cover



Rear cover:
Check that screws are tight



Front cover:
Check that screws are tight



Check tensioning strap for damage



Edscha Eco variant with fixed rear wall:
Check rear corner post link and bend
for damages, cracked weld seams etc.

2.8 Twin-level equipment



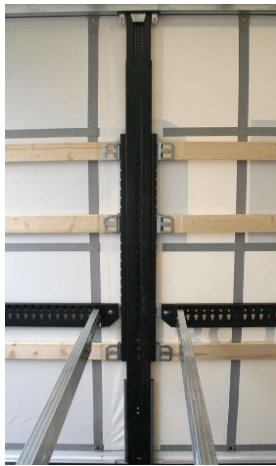
Girders: Check for proper state, check that rivets are tight



Side tarpaulin: Check the weld seams of strap reinforcements for cracks and damages



Front corner post: Check that all rivets and screws are tight



Central posts: Check that all rivets and screws are tight



Central side posts: Check that the rail rivets are tight



Central side posts, bottom: Check that rivets are tight



Central post: Check mounting of slat pockets



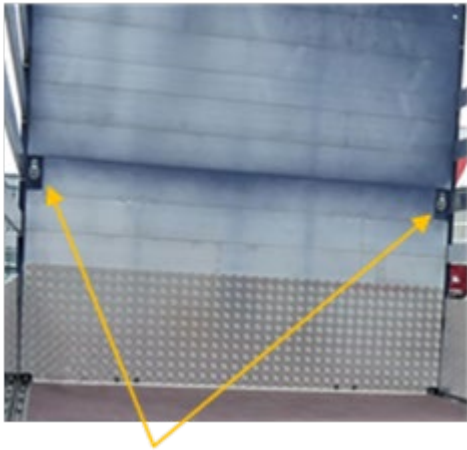
Front corner post: Check that the rail rivets are tight



Rear corner post: Check that the rail rivets are tight

2.9 Load securing / lashing equipment

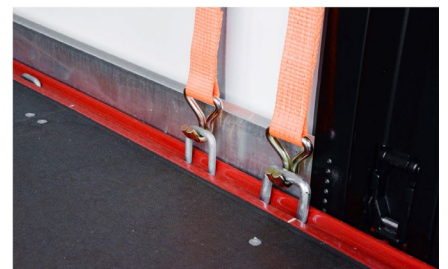
Please check the various designs of load securing and lashing equipment for damage and proper operability. Also check that their mounting elements are tight.



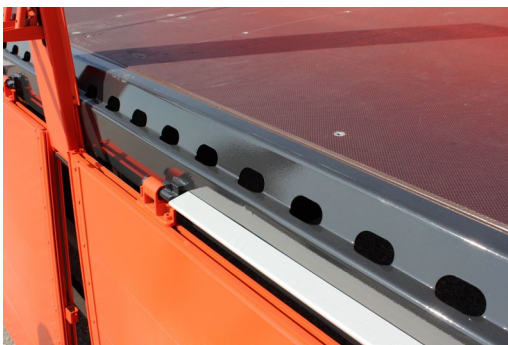
Lashing rings at front wall



Various lashing rails



Various lashing bracket designs along the platform



Various designs of outer frames with holes

VIN:

--	--	--	--	--	--	--	--	--	--	--	--	--	--	--	--	--	--	--	--

Item	Inspection Date	Stamp	Signature of Tester
10			
			Name
11			
			Name
12			
			Name
13			
			Name
14			
			Name
15			
			Name
16			
			Name
17			
			Name
18			
			Name
19			
			Name
20			
			Name